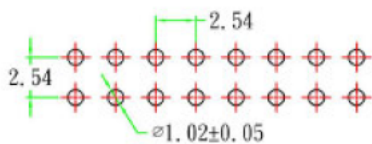
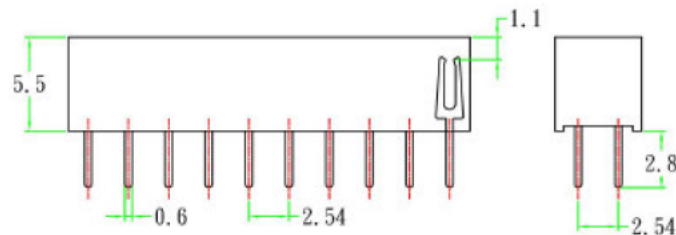
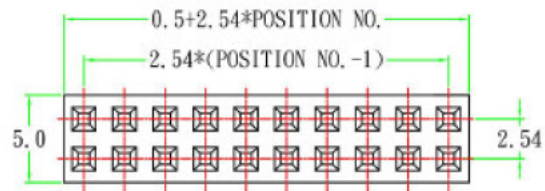


SM C02 2804 XX BS H=5,5



RECOMMENDED P. C. B LAYOUT

SPECIFICATIONS

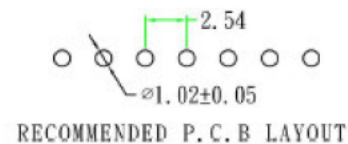
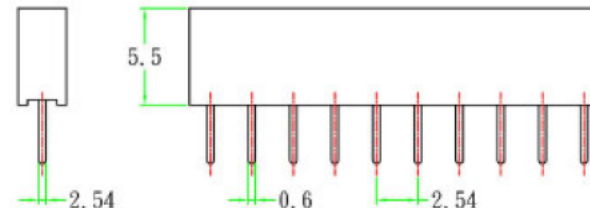
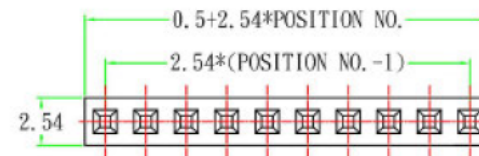
Material

Insulator:PBT, glass reinforced, rated UL94V-0
Contact:Phosphor Bronze



Electrical

Current Rating:1 Amp
Contact Resistance:30mΩ Max.
Insulation Resistance:3000MΩ Min.
Dielectric Withstanding Voltage:500V AC for 1 minute
Operating Temperature: -40°C to +105°C

SM C02 2804 XX AS H=5,5



RECOMMENDED P. C. B LAYOUT

TOLERANCE		
SCALE	UNIT mm	
DRAW Walter	DATE 20.8.2017	TITLE
CHECK Vanda	REV	SM C02 2804 XX YS H=5,5
		DESCRIPTION
		Header Female Straight RM2,54; H=5,5